

Saturday Afternoon Sailing Series

COURSE RACE SAILING INSTRUCTIONS

June 3 – September 9, 2017

South Shore Yacht Club | Milwaukee Yacht Club

1 RULES

- 1.1 The Series will be governed by the rules as defined in *The Racing Rules of Sailing (RRS)*.
1.2 The U.S. Sailing Safety Equipment Requirements (SER) for US Nearshore Safety Equipment including the following amendment will apply: A functioning VHF that can be heard in the cockpit is required.

2 CHANGE OF CLASS RULES

- 2.1 The Saturday Afternoon Sailing Series may assign a PHRF-based Handicap for specific boats.

3 NOTICES TO COMPETITORS

- 3.1 Notices to competitors will be posted on the official notice board located at South Shore Yacht Club and Milwaukee Yacht Club.

4 CHANGES IN SAILING INSTRUCTIONS

- 4.1 Any change to the sailing instructions will be posted at least 2 hours before the warning signal on the day it will take effect.

5 SIGNALS MADE ASHORE

- 5.1 Signals made ashore will be displayed on the SSYC AND MYC flag masts.
5.2 When flag AP is displayed ashore, "1 minute" is replaced with "1 hour" in race signal AP.

6 SCHEDULE OF RACES

- 6.1 Course races are scheduled as follows:

Course Race 1	Saturday June 3, 2017	(Skelding)
Course Race 2	Saturday July 1, 2017	(Stephenson)
Course Race 3	Saturday July 29, 2017	(Tanger)
Course Race 4	Saturday August 19, 2017	(Commodores)
Course Race 5	Saturday September 9, 2017	(Grudge)

6.2 COURSE RACE STARTING SEQUENCE & CLASS FLAGS

<u>Scheduled Sections</u>	<u>Scheduled Warning Signal</u>	<u>Start Signal</u>	<u>Class Flag</u>
SECTION #3	13:30	13:35	Numeral #3
SECTION #2	13:35	13:40	Numeral #2
SECTION #1	13:40	13:45	Numeral #1

- 6.3 Official race committee time will be GPS Central Daylight Time.

- 6.4 The MYC Big Triangle and Port Washington Distance Races will be sailed in accordance to the 2017 MBOS/PHRF Fleet Sailing Instructions.

6.5 SCHEDULE OF DISTANCE RACES

Distance Race 1 Saturday 7/8/2017 – MYC Big Triangle
Distance Race 2 Saturday 8/12/2017 – Racine Race
Distance Race 3 Saturday 9/1/2017 – Port Washington Race

6.6 MYC BIG TRIANGLE & PORT WASHINGTON DISTANCE RACE STARTING SEQUENCE

<u>Sections</u>	<u>Scheduled Warning Signal</u>	<u>Scheduled Start Signal</u>	<u>Class Flag</u>
SECTION #7 – ALL SASS	REFER TO MBOS SAILING INSTRUCTIONS		

6.7 RACINE DISTANCE RACE STARTING SEQUENCE & CLASS FLAGS

<u>Scheduled Sections</u>	<u>Scheduled Warning Signal</u>	<u>Scheduled Start Signal</u>	<u>Class Flag</u>
ALL SECTIONS	10:30	10:35	Numeral #1

7 CLASS FLAGS

7.1 Class Flags will be numeric pennants based on the division classification.

8 RACING AREA (See Illustration "A".)

8.1 The course racing area will be the SSYC fixed mark course on Lake Michigan. See Illustration "A".

8.2 For the MYC Big Triangle & Port Washington distance races see the MBOS Sailing Instructions.

8.3 The Racine Distance Racine racing area will be between the SSYC Race Course and the Racine Yacht Club Racine Race course. See Illustration "B".

9.1 THE COURSE RACE COURSE

The course will be a twice around triangle as follows:

Start at SSYC West (W) Mark, to round the green Bell Buoy (S) to port, to round the SSYC Center Race Mark (C) to port, to round the SSYC West (W) Mark to Port, twice around, finish at SSYC West (W). See Illustration "A".

9.2 THE RACINE DISTANCE RACE COURSE

The Racine Distance Race will be a 16.08 nm distance race. The start will be the Green Bell Buoy (S) mark to starboard and the RC signal vessel to Port, then to the R-14 Bell Buoy rounded to starboard, then to R-16 Nun rounded to starboard, then to the finish at a throw in mark near the Racine Yacht Club race course to starboard with the RC signal vessel to Port. See Illustration "B".

The Approximate LL for the Racine Yacht Club Race course throw-in finish buoy is:

N 42.44.240
W 087.44.860

10.1 COURSE RACE MARKS

SSYC marks to be used are as follows:

The South (S) mark is the green government Bell Buoy.

The West (W) mark is an orange ball and the Center (C) mark is an orange cylinder with a white stripe and white spar.

10.2 DISTANCE RACE MARKS

The Racine Distance Races are as follows:

The South (S) mark is the green government Bell Buoy.

The R-14 mark is a red government Bell Buoy.

The R-16 mark is a red government Nun Buoy.

The Finish mark will be a throw in near the Racine Yacht Club race course.

11 THE START

11.1 The Standard starting sequence, RSS 26 will be in effect for all starts.

11.2 A boat intending to race shall, prior to her warning signal, sail past the stern of the race committee vessel, hail her sail number or call via VHF, and be acknowledged by the race committee. Boats not in their starting sequence shall stay clear of the starting area and its extensions.

11.3 The start line will be a staff displaying an orange flag on the race committee signal vessel at the starboard end and the course side of the West mark at the port end, except for the Racine Distance Race.

11.4 Race Committee may deploy a "guard" mark from the stern of the Race Committee Signal vessel. This mark and its rode will be considered part of the Race Committee signal vessel.

11.5 The Race Committee, will make one sound one minute prior to the first warning signal of the day. This modified RRS 26.

12 RECALLS

The race committee will hail OCS boats via VHF Channel 79. Failure to hear an OCS hail will not be grounds for redress.

13 THE FINISH

13.1 The finish line for the Course Races will be between a staff displaying a blue flag on the race committee signal vessel and a nearby mark at the Port end.

13.2 The finish for the Racine Distance Race will be between a staff displaying a blue flag on the race committee signal vessel and a nearby mark at the Starboard end.

13.3 All boats shall record their time as they round the R16 nun buoy and submit this recording to the Race Committee or Fleet captain within 2 hours of docking if the Race Committee finishing vessel is not on station at the prescribed finish mark.

14 PENALTY SYSTEM

14.1 The Scoring Penalty, RRS Rule 44.1 & 44.2, will apply. RSS Appendix V, Section V2 (the post race penalty) will also apply.

15 TIME LIMIT

15.1 For the course races, RRS 35 is modified. Boats failing to finish by 16:00 will be scored points equal to 1 more than the number of boats that finished in her division.

15.2 For the MYC Big Triangle and Port Washington distance races - see the MBOS Sailing Instructions.

15.3 For the Racine Distance Race the time limit for all boats is 16:00 on 8/12/2017.

15.4 For the Racine Distance Race, if the lead boat has not rounded the R-14 Bell Buoy by 14:30 hours, the race committee may abandon the race.

16 PROTESTS AND REQUESTS FOR REDRESS

16.1 RRS 61.1(a) is modified. A boat intending to protest must notify the Race Committee at the finish of the race of her intent to protest and the identity of the protested boat.

16.2 A boat intending to protest will submit an official US Sailing written protest form to the Race Committee PRO within one hour of the Race Committee return dock time.

17 SCORING

17.1 The low point scoring system Appendix A will apply and both JAM and spinnaker boats will be scored together by section.

17.2 A boat can discard its worst finish after (5) total course or distance races are complete, can discard its (2) worst finishes after (7) races and its (3) worst races if all 8 races are completed.

17.3 One (1) race is required to be completed to constitute a series.

18 RADIO COMMUNICATIONS

18.1 The race committee and racing boats will monitor VHF channel 79. A boat shall not monitor private communications between race committee personnel, except as permitted by the notice of race or the sailing instructions.

18.2 A boat withdrawing from the race shall report their intent to withdraw to the Race Committee on VHF channel 79. If it is not possible to report their actions to the Race Committee while on the water, the skipper shall report their actions to the Race Committee PRO immediately upon arriving ashore.

19 PRIZES

19.1 Class Position Flags for lowest series point total will be awarded for the entire series places first through third for the entire SASS series for each section and be awarded at the SSSC winners dinner.

19.2 Class Position Flags for the lowest total will be awarded for the Racine Distance Race for first through third in each section along with a first overall trophy.

Illustration A:

SASS "Fixed" Race Course

This course will be used for all MBSAS Course Races

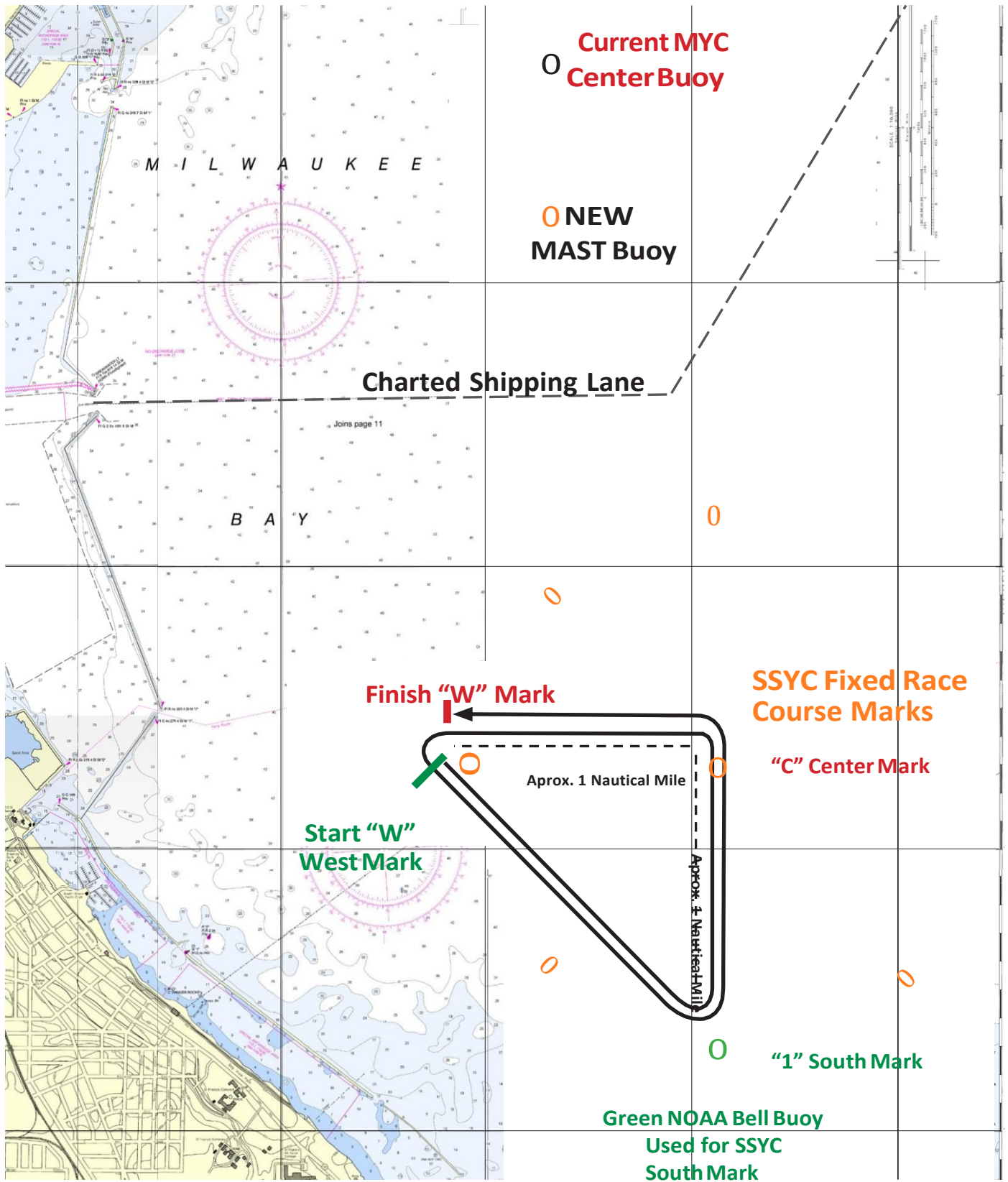


Illustration B:

SASS Racine Race Course

